

Dates

November

17th National Agriculture Day.

2024

Wednesday 11th September Birchip Cropping Group Main Field Day

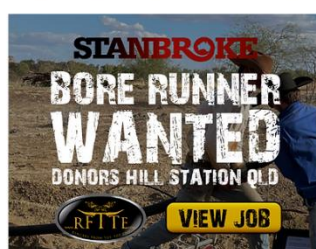
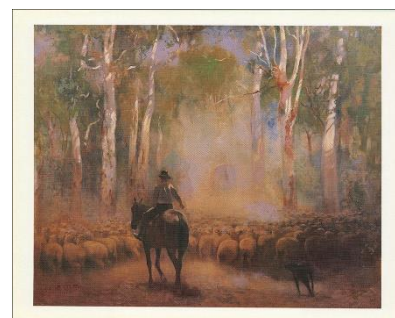
Working in Outback Australia

There is romance and sentiment linked to the concept of working in outback Australia. Many of us at one time or another have fancied ourselves as Clancy of the Overflow looking out on the 'sunlit plains extended'.

While there are many challenges for young people moving to work on isolated cattle or sheep stations, there is also an opportunity to gather precious life experience that you can draw on for the rest of your life.

There is a myriad of agricultural recruitment agencies. These are to ones I am familiar with

- [Drover Ag,](#)
- [Ag Workforce](#)
- [Ringers from the Top End](#)



Local Young People Working on Stations

Acacia Vernon (Boort)

Commonwealth Hill Station owned by Jumbuck Pastoral in South Australia. 110 km west of the Stuart Hwy. This station runs 30,000 sheep and the entire Jumbuck Pastoral Co is the biggest wool grower in Australia.



Fergus Bourke (Charlton) Wonnaminta Station NSW. 190,000 acres.

They have just mustered the property to do the lambmarking, shearing is in January.

LOCATION: 210km N/NE Broken Hill. 50km to Packsaddle Roadhouse and Silver City Highway



Lachie Bear (Loddon Vale)

Camfield Station (AACo) 695km south of Darwin. This property predominantly runs Brahman cattle. Lachie is a second year Ringer. Lachie has had lots of opportunities to develop his skills and knowledge. He says it is long hours and hard work, but there is also a good social life.



National Ag Day



It's National Ag Week 2023! 🌻🐄

PIEFA have created a sensational Digital Learning Kit that will get primary and secondary students engaged in food and fibre content. With a focus on STEM, innovation and technology, the lessons in the PDF download are curriculum-aligned and cover various subject areas.

Listen to the short and sharp video interviews with people working in a range of primary industries, as they talk about the technology they've introduced to be more sustainable, efficient and cost-effective. **Included is local Yarrawalla farmer Adele Smith.**

Find out how you can get involved:

<https://primezone.edu.au/national-ag-day/>

Timboon P-12 TAP Expo

Julie Bourke and I (NCLLEN) and Tara Crowe (Murtoa College) were grateful for the opportunity to attend Timboon Agricultural Project Open Day last week.

Their story is a powerful one. Ten years ago their school was failing on many levels. Student engagement and retention was poor and the school had become disconnected from the community. A committed group of community members, parents and staff formed a committee, and the Timboon Agriculture Project began. They do not teach any formal agriculture subjects in their curriculum, but instead use agriculture and community as the context for learning within subjects.

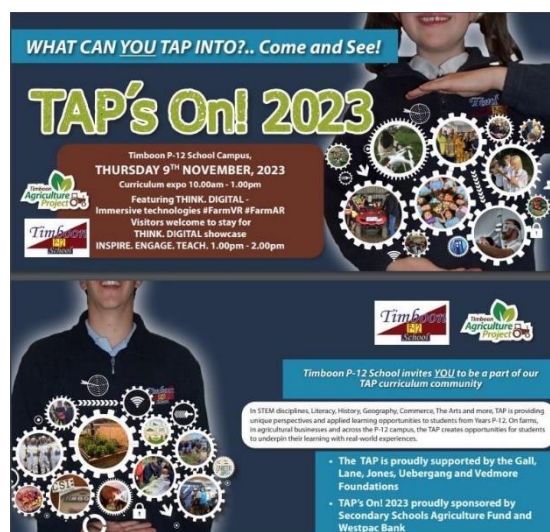
Examples –

- GPS cow collars for Digital Tech
- Mock cow autopsy with a local vet, for middle school science
- For English, students working with Landcare to record older residents' memories of a river.
- Working with the CFA to learn about fire and natural disasters
- Digital Tech - Dog vs Drone – which one is more helpful?
- Cow simulator (SW TAFE) to learn about reproduction.
- Growing lavender and selling it for Business Studies

Andrea Vallance who is employed as a "community broker" says *'I'm really happy to share what we do as it can be replicated anywhere where a community is invested in its school.'*

Check out their blog - <http://timboonagproject.weebly.com/tap-blog>

If some of these concepts resonate with your school. Contact me and I can arrange a visit for you (CRT coverage too)



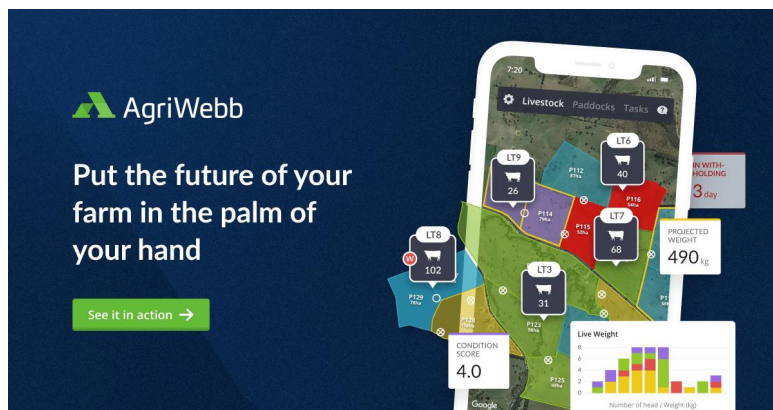
Agri-Tech Check

I had a very stimulating day at CQ Uni in Melbourne last week

I encourage staff to seek out events by this team. They are closely tailored to the Vic curriculum.

My take home messages were -

1. Agriwebb is **FREE** for schools/teachers/students. It is an online farm management tool. Many farmers in our region already use it. Their online tutorials are great for students and even techno-phob farmers. Students could use Agriwebb to map their school farm and keep track of livestock.



2. **Escavox** is a tracker that is put into boxes of fresh food and can provide real time data as the food moves through the supply chain such as location, time and temperature. Escavox is an example of an agri-tech startup. The problem it was addressing is food waste

One third of the world's food is wasted.
If food was a country, it would be the
third largest greenhouse gas emitter
behind the USA and China

3. **GPS monitors** are affordable, accessible and can easily be put on a sheep or cow. The data from their movements can be used by students to hypothesize about pasture palatability, shelter, and waterpoints.

Agriculture Scholarship

Nutrien Ag Senior Student Agriculture Award North Central Cluster Schools

Nutrien Ag are very enthusiastic about offering a senior student in each of our schools an agriculture scholarship. Apart from the recognition and monetary reward, Nutrien staff are most excited about the opportunity to link with the winners of the award and showcase the exciting careers in agriculture.

Please contact me with your nominated recipient by early December.

Food for Christmas

Our region is an absolute food bowl of deliciousness! Support local agriculture at Christmas!

- Wine
- Olive oil and olive products
- Cherries
- Special Christmas meat packs from your local butcher
- Premium Salt
- Honey
- Avocado subscription from Barham
- Brownie Mix with Chick Pea flour from Rupanyup



In the Garden

If you haven't already, it is time to pick your garlic. Let it cure for a couple of days and then if you are clever, braid it before hanging in a cool dark place.

I also picked my onions. Maybe it was too early, but some of them were running up to seed and I needed the bed for more corn!



My strawberries are in full production.

Someone said to me the other day, that there is a reason, strawberries are called STRAWberries. They should be grown in amongst straw to keep the berries clean and the shallow roots protected.

The strawberry dates back to Ancient Rome where it was considered the symbol of Venus, the goddess of love. I suspect many Ancient Roman mothers weren't actually thinking about romantic love when they were awkwardly bent over in the hot sun tediously picking strawberries. They were thinking of mother love – there is no lolly treat that can equal a child's unbridled joy when they eat a sweet strawberry.



Sue Gould
Project Officer
P: 0490 205 705
Email: s.gould@ncllen.org.au



21st Century Careers in Agriculture is funded through the Sustainable Schools Agriculture Fund